

CONSTRUCTION SITE CHALLENGE: CORRECTLY SEPARATING – CORRECTLY RECYCLING

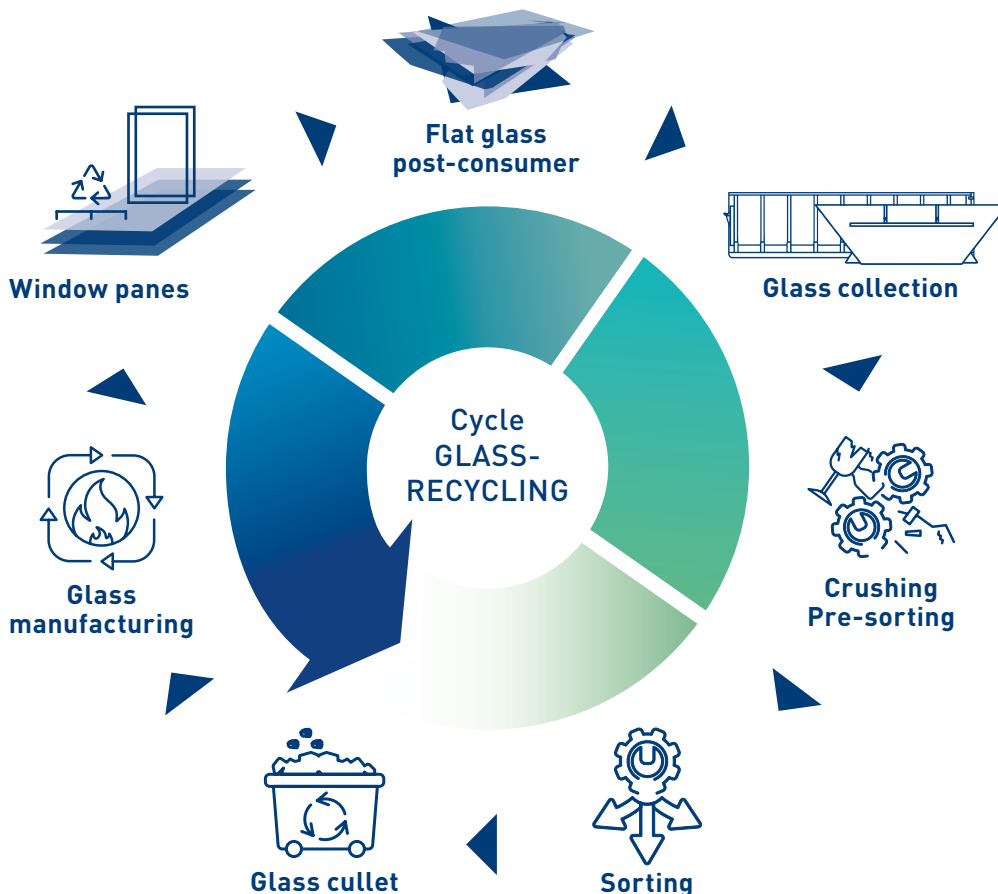
„Glass can be recycled an unlimited number of times without any loss of quality. The key to this is sorting and processing the different types of glass waste separately.“

Bernhard Reiling, owner of the Reiling Group



In construction projects, the large number of non-glass materials poses a high risk of contamination. If impurities get into the glass, they reduce its quality, make recycling more difficult and can significantly or even completely prevent its reuse for glass melting.

Support us with proper glass collection at your construction project for optimal glass recycling!



Why is glass recycling important? Glass recycling contributes significantly to environmental and resource protection. By using 10% recycled glass cullet, approximately 3% energy and 5% CO₂ can be saved in glass production.



ISO MIX

POST-CONSUMER

YES

- Clear, colourless flat glass
- Insulating glass with frame compound
- Clear, colourless single-pane safety glass
- Flat glass in foil compound, laminated safety glass, etc.
- Coloured or (colour) coated flat glass (possible after consultation)

NO

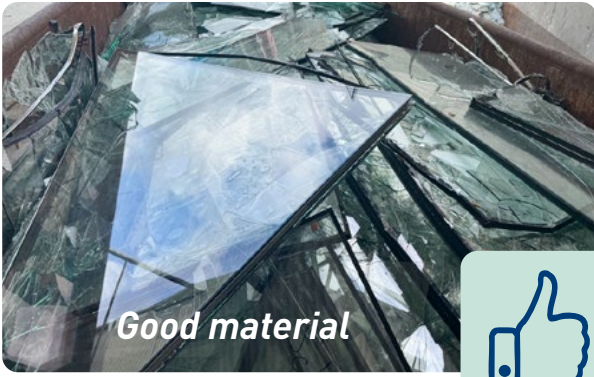
- Glass ceramics, oven glass panels, ceran hobs, etc.
- Laboratory glass and other kinds of special glass
- Lead glass (lead crystal glass, screens, X-ray protection glass, etc.)
- Mirror glass (possible after consultation)
- Wired glass (possible after consultation)
- Container glass (bottles, etc.)
- Glass blocks with mortar adhesions
- Ceramics, stones and porcelain (CSP)
- Paint, oil, glue, bitumen, etc. (not even when adhering to glass)
- Glass grinding residues (grinding stones, abrasives and grinding sludge)
- All other kinds of impurities (paper, wood, foil, stainless steel, plastic, etc.)



*Deviations from the quality guidelines may result in a complaint.
Furthermore, our general quality agreements for collected waste glass
apply (accessible on our website www.reiling.de).*



CONSTRUCTION SITE CHALLENGE: CORRECTLY SEPARATING – CORRECTLY RECYCLING



Good material



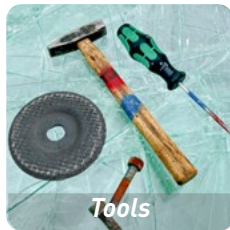
Poor material



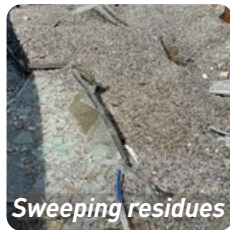
Impurities



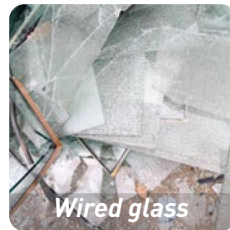
Stones



Tools



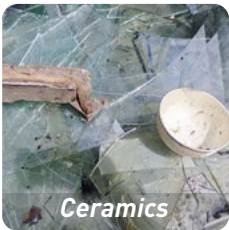
Sweeping residues



Wired glass



Glass blocks with mortar adhesions



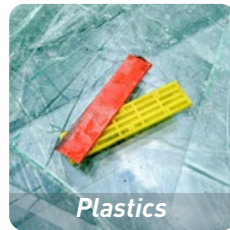
Ceramics



Porcelain



Whetstone



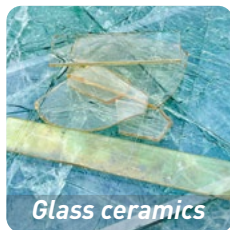
Plastics



Blades



Wood and paper



Glass ceramics



Colour spray



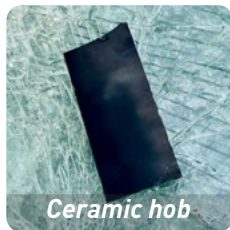
Container glass



Mirror glass



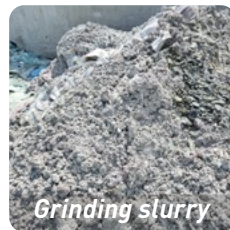
Crystal glass



Ceramic hob



Oven viewing glass



Grinding slurry



All contents of this work, in particular texts, photographs and graphics, are protected by copyright. The copyright is held by Reiling Glas Recycling GmbH & Co. KG. Any use is only permitted with express permission.

